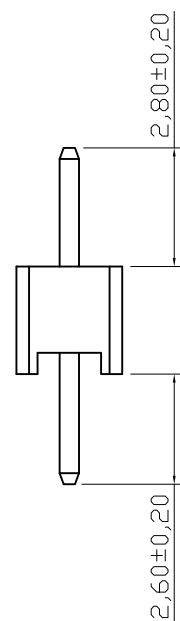
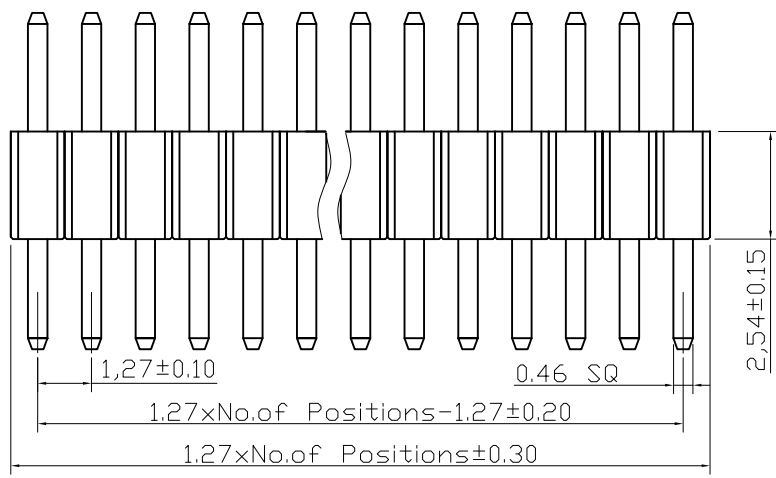
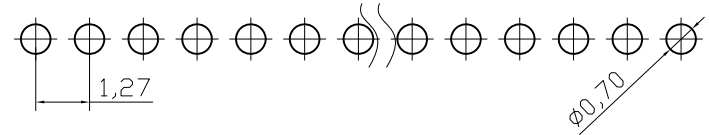


Recommended PCB Layout(Top Side)  
(PCB BOARD TOLERANCE±0.05)



**NOTES:**

**MATERIAL**

- 1.Insulator Material:PA6T+30%GF(UL94V-0)
- 2.Contact Material : Brass
- 3.Contact Plating :Gold Flash


**ELECTRICAL**

- 1.Current Rating : 1.0AMP
- 2.Withstand Voltage : 500V AC/DC
- 3.Contact Resistance : 20mΩ max
- 4.Insulation Resistance: 1000MΩ min

**ENVIRONMENTAL**

- 1.Operation Temperature: -40°C to +105°C
- 2.Packing : PE Bag

**RoHS compliant**

Scale	1:1					Date	Name	Customer-No.
TOLERANCE					Drawn	27.07.2009	Dean	ASSMANN WSW-No. A-SL127-EG-GxxD
X.X	±0.40				Approved	27.07.2009	Hellwig	
X.XX	±0.25							
X.XXX	±0.15							
DIM	TOL							Drawing-No.
Angle	±3°							ASS 3583 CO
		①	Drawn	27.07.2009	Dean			rev01
		Id.	Modification	Date	Name			Replace